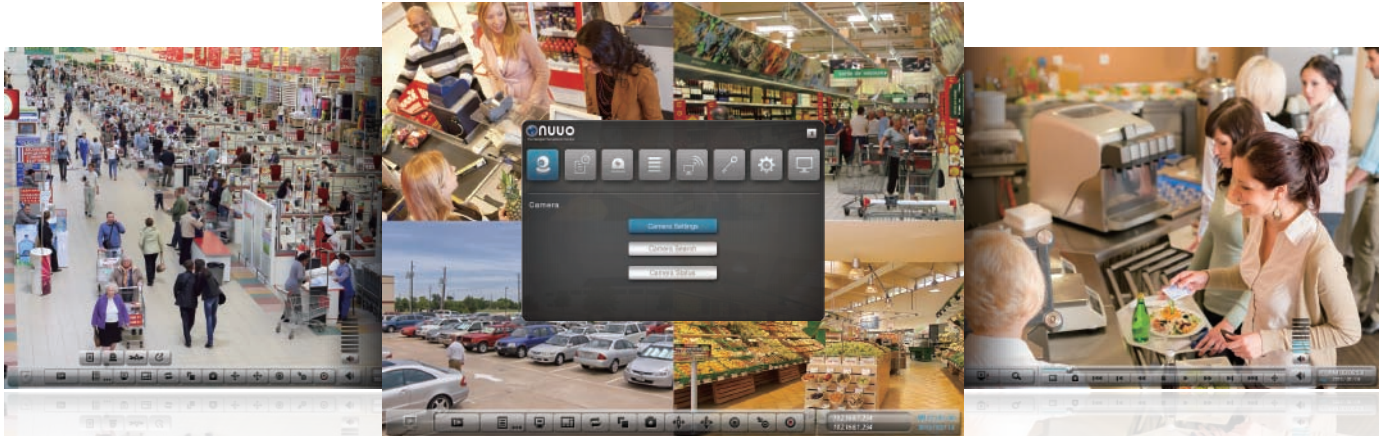


NUUO NVRsolo

SIMPLE • QUICK • EFFICIENT



2013 Awards



The Simple Answer for Reliable NVR

7 Minute One Click Setup

Router Free Settings

POS Integration

Simple, Effortless Standalone NVR

NUUO NVRsolo is NUUO's answer to hassle free, lightweight NVR system. It is small in size yet able to handle heavy duty tasks. With local HDMI/VGA display and keyboard/mouse input built right into the unit, configuring NUUO NVRsolo is easy and simple. Built on solid Linux foundation, we sacrificed nothing except unnecessary bulk to make NVRsolo the award winning standalone NVR solution you have been looking for. NUUO NVRsolo's flexibility doesn't end there. For those needing more storage options, we offer 8 bay versions to meet your needs.

Feature Highlights

Local

- High quality local display - 120fps @1080p, H.264
- Linux embedded – safer solution against PC crashes and virus
- One-click setup for more than 80 brands of IP cameras
- Supports camera multi-stream setting
- ezNUUO – free from router settings for web/mobile viewing
- Point of Sale (POS)¹
- Alarm source for NUUO Central Management System
- RAID 0, 1, 5, 10 for data protection²
- Supports megapixel cameras and H.264 compression format
- Camera I/O integration
- Real-time digital output, email alert and push notification on mobile
- NTP server synchronization
- Compatible with touch panel³
- Support 100 brands of IP cameras and 2300 models³ (with free monthly update)
- Supports camera snapshot
- Supports camera two-way audio
- Supports hard disk S.M.A.R.T test
- Supports embedded motion detection

Remote

- Supports camera multi-stream for remote live view bandwidth control⁴
- Supports mobile client for iPhone / iPad / Android
- Up to 128 CH remote live view with multiple monitors

Web

- Web-based configuration, live viewer, playback (recommend on IE/Chrome on Windows OS, and Safari on Mac OS.)
- Online GUI recording schedule
- Panorama 360° PTZ (ImmerVision and VIVOTEK fisheye)
- Generic dewarp (fisheye)
- Digital PTZ and multi-view
- Support joystick for easier camera control
- Playback with 5 types of intelligent event search
- E-map with indicator
- Digital watermark

¹. POS device configuration is only available in web.
². RAID 5, 10 are only available with NS-8060 and NS-8065
³. Acer T232HL and ViewSonic TD2220
⁴. Please check the supported camera spec list on
http://www.nuuo.com/SupportCamera.php?node_id=4#5

Router Free One Click Setup

NUUO NVRsolo features simple, one click setup process. You can set up NUUO NVRsolo in as little as 7 minutes. Also, no need to work with complicated router setting, no proxy and no firewall bypass. Plug in NUUO NVRsolo. It just works.

Embedded Motion Detection



NUUO NVRsolo embedded motion detection function can work with any IP video devices which are supported by NUUO Device Pack. It helps user to minimize the installation time from toggling between camera web setting page and NUUO NVRsolo menu.

Ready for Action in 7 Minutes



With support for 3rd party plugin, easily integration existing POS solution and experience hassle free metadata feature on dedicated camera channels in live view. All transaction data is stored in SQLite format for business analysis later.

POS Integration



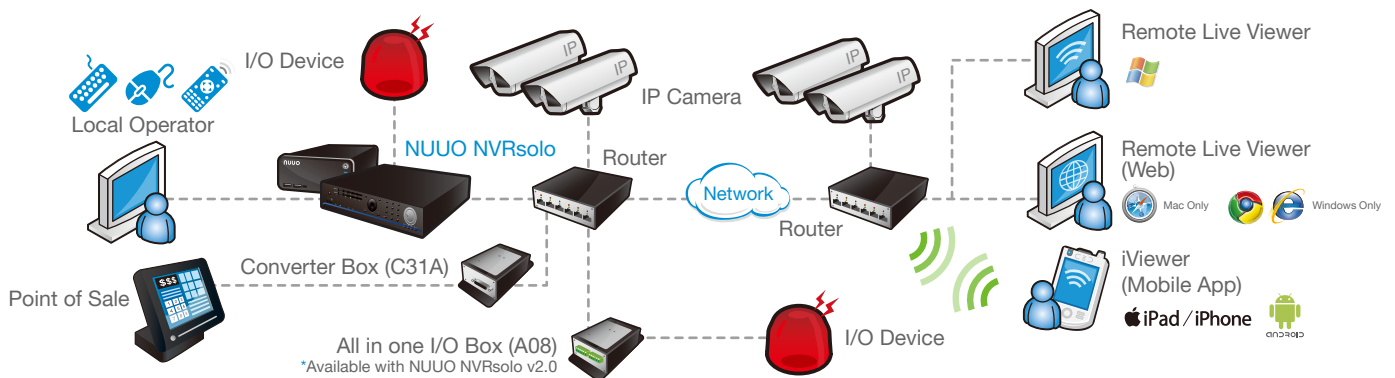
Is NUUO NVRsolo a Good Fit for me?

NUUO NVRsolo is perfect for most SMB owners because they do not have the budget to hire additional security or IT personnel to monitor safety on premises. The best solution we recommend then for SMB is to choose NUUO NVRsolo to manage surveillance cameras. One of our partners choose NUUO NVRsolo to manage over 200 condominiums at a senior community home, and the effortless installation and stable experience was much appreciated by the entire onsite resident and staff.

Client Case Study

Specification

Product Image							
Type	2-bay			8-bay			
Model Name	NS-2040	NS-2080	NS-2160	NS-8060	NS-8160	NS-8065	NS-8165
Maximum Number of Licenses	16	16	16	16	16	16	16
Base License	4	8	16	6	16	6	16
Video Output	HDMI or VGA						
Output Resolution	1920x1080, 1280x1024, 1280x720, 1024x768						
Decoding Capacity	120fps @1080p or 240fps @720p (H.264/MPEG4; MJPEG/MxPEG is with limited support)						
Recording Performance	80 Mbps			80 Mbps			
Operating System	Embedded Linux						
Compression	H.264, MPEG4, MJPEG, MxPEG (depends on IP camera)						
HDD Bays	2 x 3.5"			8 x 3.5"			
RAID Level	0, 1			Single		0, 1, 5, 10	
External Storage	DAS						
Ethernet Port	2 x Gigabit Port, RJ-45						
External Ports	5 x USB 2.0			4 x USB 2.0			
On-Box I/O	0/0			16/4			
Audio	Two - way						
Voltage	DC 12V 5A			AC 100V~240V, 3.5A~1.5A, 60-50Hz			
Power Consumption	Full loading: 23W, Max: 60W			Full loading: 80W, Max: 250W			
Dimensions (H x W x D)	70.5 x 215 x 260 mm			88.5 x 438 x 442 mm			
Weight (without HDD)	2.23 kg (4.91 lbs)			9 kg (19.84 lbs)			
Temperature (Operating with HDD)	0° C ~ 40°C (32°F ~ 104°F)						
Humidity (Operating)	5% ~ 95%						
Remote Client	Remote Live Viewer (Software), Remote Live Viewer (Web), iViewer (Mobile App)						
Remote Client OS	Windows XP (32-bit), Win7 (32 and 64-bit), Win8 (32 and 64-bit)						
Mobile Client Platform	iPhone, iPad, Android						
Supported Languages	Chinese (Simplified), Chinese (Traditional), Croatian, Czech, English, Finnish, French, German, Hebrew, Italian, Japanese, Korean, Polish, Portuguese, Portuguese (Brazil) , Russian, Spanish, Swedish, Thai, Turkish						



About NUUO

Founded in 2004, NUUO Inc. is one of the leading global surveillance solution providers known for its reliability, prompt service and innovative spirit. NUUO's VMS and NVR solutions offer comprehensive recording, monitoring, and seamless 3rd party solution integration for IP and analog cameras.